

# Рождественская Ночь

Cello

*pizz.*

7 *arco*

12

17

25

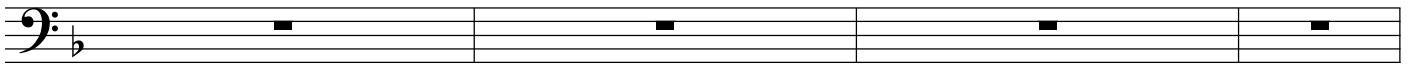
30 *pizz.*

35 *arco*

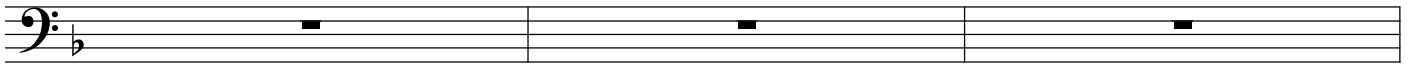
42

Detailed description of the musical score: The score is written for a cello in 4/4 time with a key signature of one flat (B-flat major). It begins with a rest for two measures, followed by a pizzicato section (measures 3-6) consisting of quarter notes with stems pointing up. From measure 7, the playing style changes to arco. Measures 7-11 continue with quarter notes, while measures 12-16 feature eighth-note patterns. Measure 17 contains a whole note with a fermata. Measures 18-24 consist of a series of whole notes with a fermata over each. From measure 25, there is a sequence of eighth-note patterns. Measure 30 marks the beginning of another pizzicato section with eighth-note patterns. Measures 31-34 continue with eighth-note patterns. From measure 35, the playing returns to arco, featuring a series of whole notes with a fermata over each. The piece concludes with a final eighth-note pattern in measure 42.

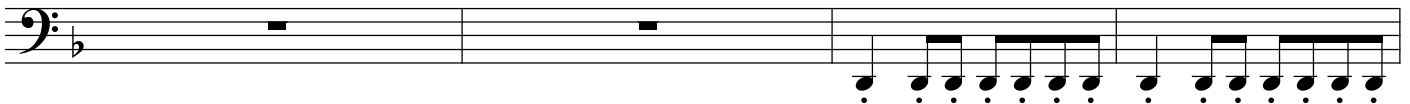
50



54



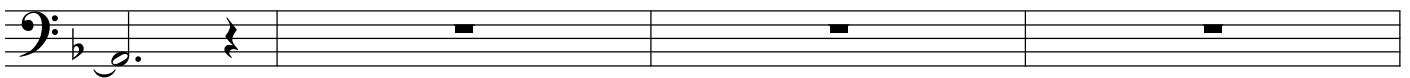
57



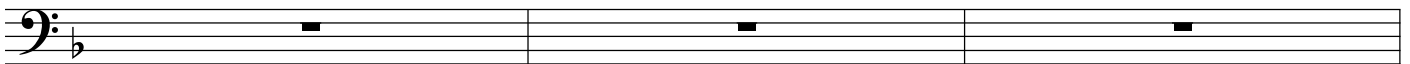
61



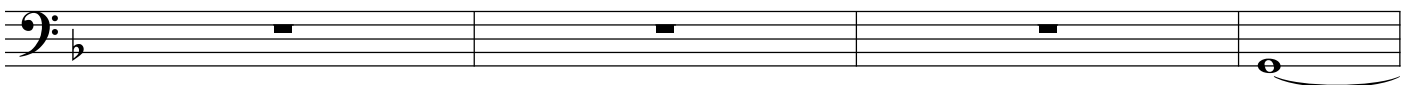
66



70



73



77



85



93



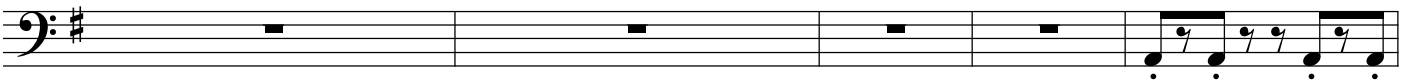
98

pizz.



104

arco



109



114

