

Violine II

O ICH ARMER SÜNDER

Andante

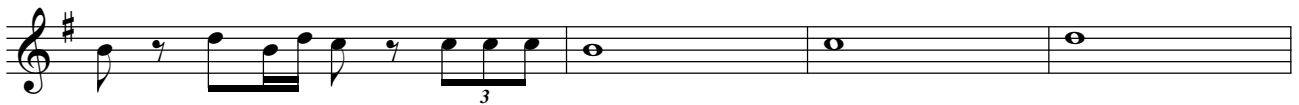
con sord.



1 Risoluto



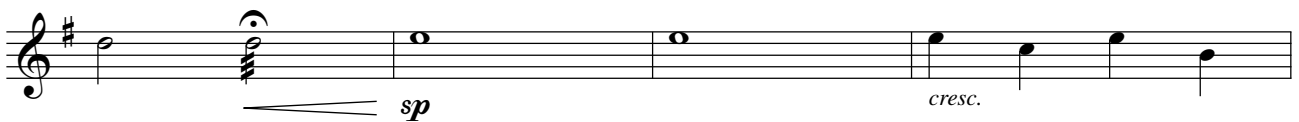
2



rit.

rubato

accel.



meno mosso

*ff* *p*

3 Moderato (♩ = c. 108)

*mp*

*mf*

*f*

accel.

4 Presto

*mp*

*spicc.* *spicc.*

Andante

*f*

sul G

*mp* *p* *pp*