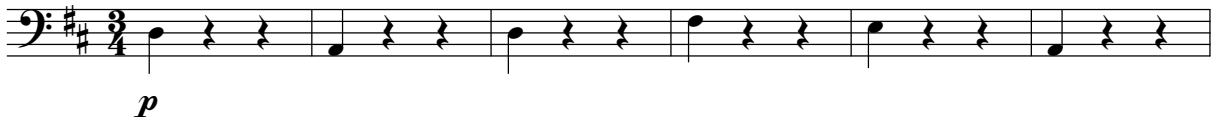


HÖRT WIE DIE ENGELEIN SINGEN

Allegretto cantabile ♩ = 120



1



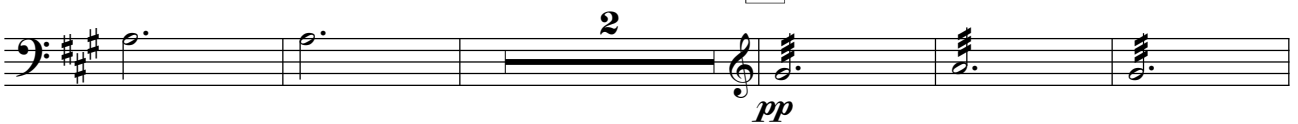
2 Allegro



3



4



5



6 Andante

Musical notation for measure 6, bass clef, key signature of two sharps (F# and C#). The measure begins with a *V* marking above the first note. A hairpin crescendo starts under the first note and ends under the second note, with the dynamic marking *p* below the second note. The notation consists of a series of eighth and quarter notes.

7 poco a poco accel.

Musical notation for measure 7, bass clef, key signature of two sharps. The measure begins with a slur over a quarter note, followed by a quarter rest. A hairpin crescendo starts under the quarter note and ends under the quarter rest, with the dynamic marking *mp* below the quarter rest. The notation continues with a series of eighth notes.

Musical notation for measure 8, bass clef, key signature of two sharps. The measure consists of a continuous series of eighth notes.

Musical notation for measure 9, bass clef, key signature of two sharps. The measure consists of a continuous series of eighth notes. The dynamic marking *f* is placed below the first note.

Musical notation for measure 10, bass clef, key signature of two sharps. The measure consists of a continuous series of eighth notes.

8 Allegro

Musical notation for measure 11, bass clef, key signature of two sharps. The measure begins with a series of eighth notes, followed by a quarter rest, then a quarter note, and another quarter rest. The notation continues with eighth notes.

Musical notation for measure 12, bass clef, key signature of two sharps. The measure begins with a quarter note, followed by a quarter rest, then a quarter note, and another quarter rest. The notation continues with eighth notes.

9

Musical notation for measure 13, bass clef, key signature of two sharps. The measure begins with a series of eighth notes, followed by a quarter rest, then a quarter note, and another quarter rest. The notation continues with eighth notes. A hairpin crescendo starts under the first note and ends under the quarter rest, with the dynamic marking *mf* below the quarter rest. The notation ends with a quarter note and a quarter rest. The dynamic marking *pizz.* is placed above the quarter note.

10 allarg.

Musical notation for measure 14, bass clef, key signature of two sharps. The measure begins with a quarter rest, followed by a quarter note, and another quarter rest. The notation continues with eighth notes. The dynamic marking *fff* is placed below the first eighth note. The marking *arco* is placed above the first eighth note.

Musical notation for measure 15, bass clef, key signature of two sharps. The measure consists of a series of quarter notes. The notation ends with a quarter note and a quarter rest.