

Он вернётся!

Флейта

Аранжировка В. Кевра

Moderato

Measures 1-7 of the score. The key signature is two sharps (F# and C#), and the time signature is 3/4. The tempo is Moderato. The first staff (treble clef) contains the melody, starting with a rest in measure 1, followed by eighth notes in measures 2-7. The second staff (bass clef) contains rests in measures 1-7. A dynamic marking of *mp* (mezzo-piano) is placed below the first staff in measure 2.

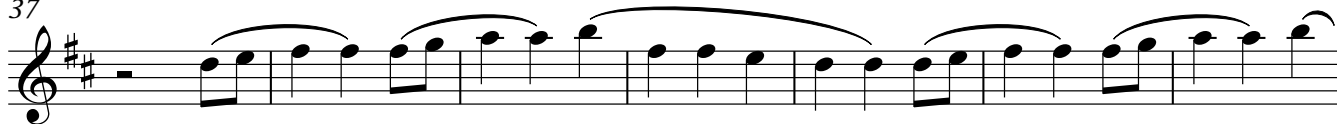
Measures 8-14 of the score. The melody continues in the first staff with eighth notes and some beamed sixteenth notes. The second staff has rests in measures 8-10, followed by eighth notes in measures 11-14. A dynamic marking of *mf* (mezzo-forte) is placed below the first staff in measure 10.

Measures 15-28 of the score. Measures 15-18 continue the melodic line. Measures 19-20 feature a whole rest in the first staff and a whole note in the second staff. Measures 21-22 are marked with a thick horizontal line and the number 8, indicating an 8-measure rest in both staves. Measures 23-24 have rests in both staves. Measures 25-28 feature a melodic phrase in the first staff, starting with a dynamic marking of *mp* in measure 25.

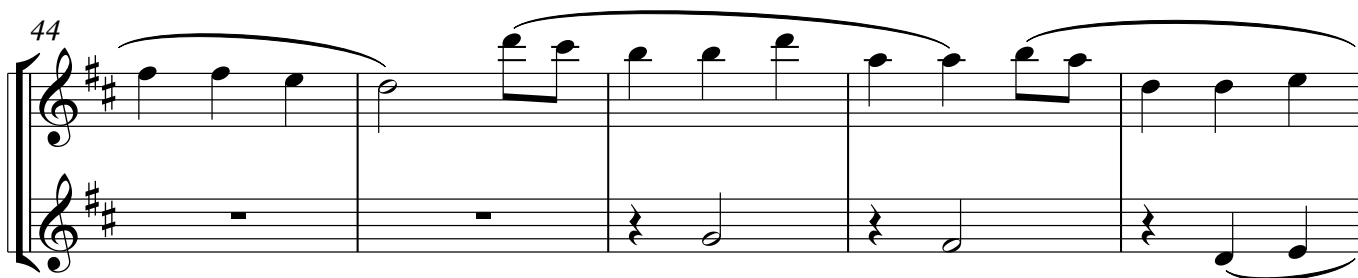
Measures 29-32 of the score. The melody continues in the first staff with eighth notes. The second staff has rests in measures 29-30, followed by eighth notes in measures 31-32.

Measures 33-36 of the score. Measures 33-35 continue the melodic line in the first staff. Measure 36 has a whole rest in the first staff and a whole note in the second staff.

37



44



49

