

СЫН ЧЕЛОВЕЧЕСКИЙ

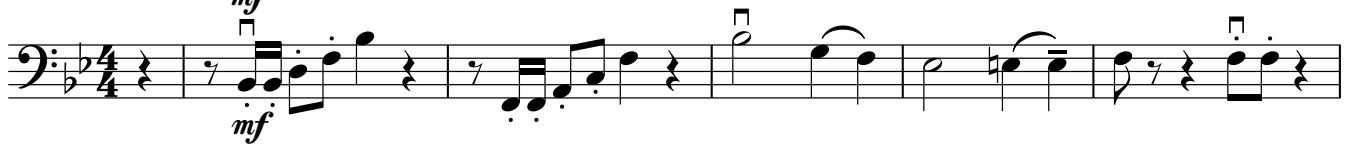
Violoncello

КАНТАТА

И.Никита

Allegro $\text{♩} = 115$

mf



6 **1**



10 pizz.



15 arco **2**



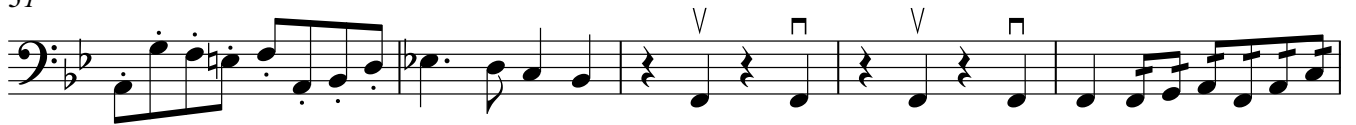
20 pizz.



25 **3**



31



36

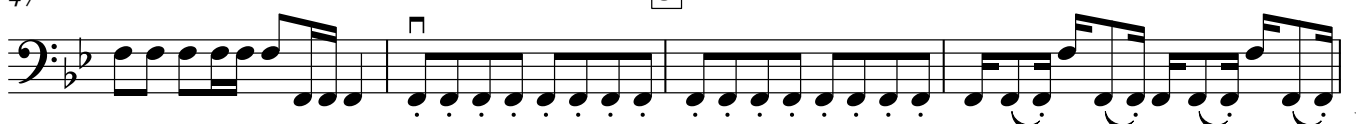


42 **4**



47

5



V.S.

51

51-53: Bass clef, key signature of two flats. The music consists of eighth-note patterns with slurs and accents.

54

54-58: Bass clef, key signature of two flats. The music features a mix of eighth and sixteenth notes with slurs and accents.

59 **6**

59-63: Bass clef, key signature of two flats. The music features eighth-note patterns with slurs and accents.

64

64-68: Bass clef, key signature of two flats. The music features eighth-note patterns with slurs and accents. A box containing the number '7' is positioned above the staff.

69

69-72: Bass clef, key signature of two flats. The music features eighth-note patterns with slurs and accents.

73 **8**

73-75: Bass clef, key signature of two flats. The music features eighth-note patterns with slurs and accents.

76

76-78: Bass clef, key signature of two flats. The music features eighth-note patterns with slurs and accents.

79

79-82: Bass clef, key signature of two flats. The music features eighth-note patterns with slurs and accents.

83 **9**

83-88: Bass clef, key signature of two flats. The music features eighth-note patterns with slurs and accents.

89

89-94: Bass clef, key signature of two flats. The music features eighth-note patterns with slurs and accents. A box containing the number '10' is positioned above the staff.

95

95-98: Bass clef, key signature of two flats. The music features eighth-note patterns with slurs and accents.

100



104



108



113 **11**



119



125

12



130

rit.



Andante ♩=65

136

13

mp



143

2



151 **14**



159 *p* rit.

165 **15** *mp* **Meno mosso** ♩=60

171 **3**

179 **16** *v* **Più mosso** ♩=65

187 **4**

Allegro ♩=120

195 **17** *mf* **4**

203 *v*

211 **18** *cresc.* *f*

221 **19** *mp*

229 rit.

236 **20** ♩=115 **2**

244



249

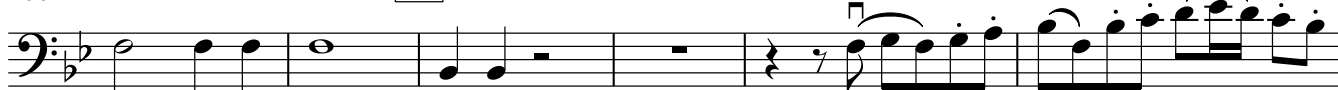


254



260

21



266



271



275



280



284

pizz.
p



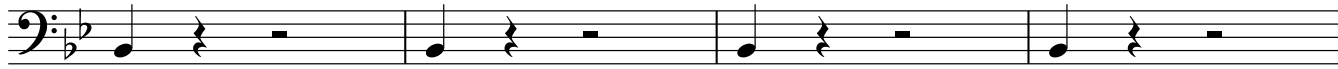
289

22



294

rit.



298 **Andante** ♩=65 23

Violoncello

mp
arco.

3

7

311 *pizz.* *pizz.*

24

316 *arco.*
cresc.

cresc.

319

322

325

327

330 25

335 26

340

344

